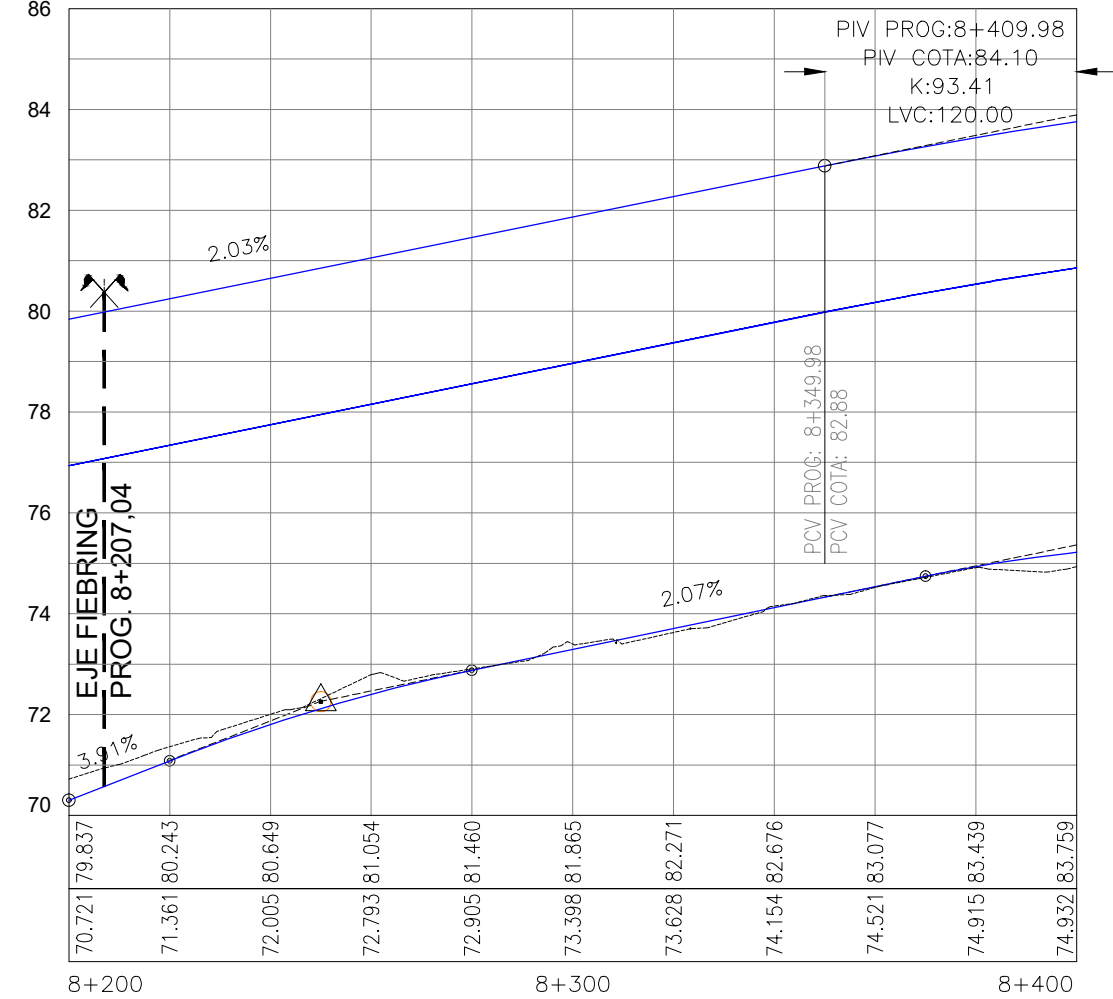
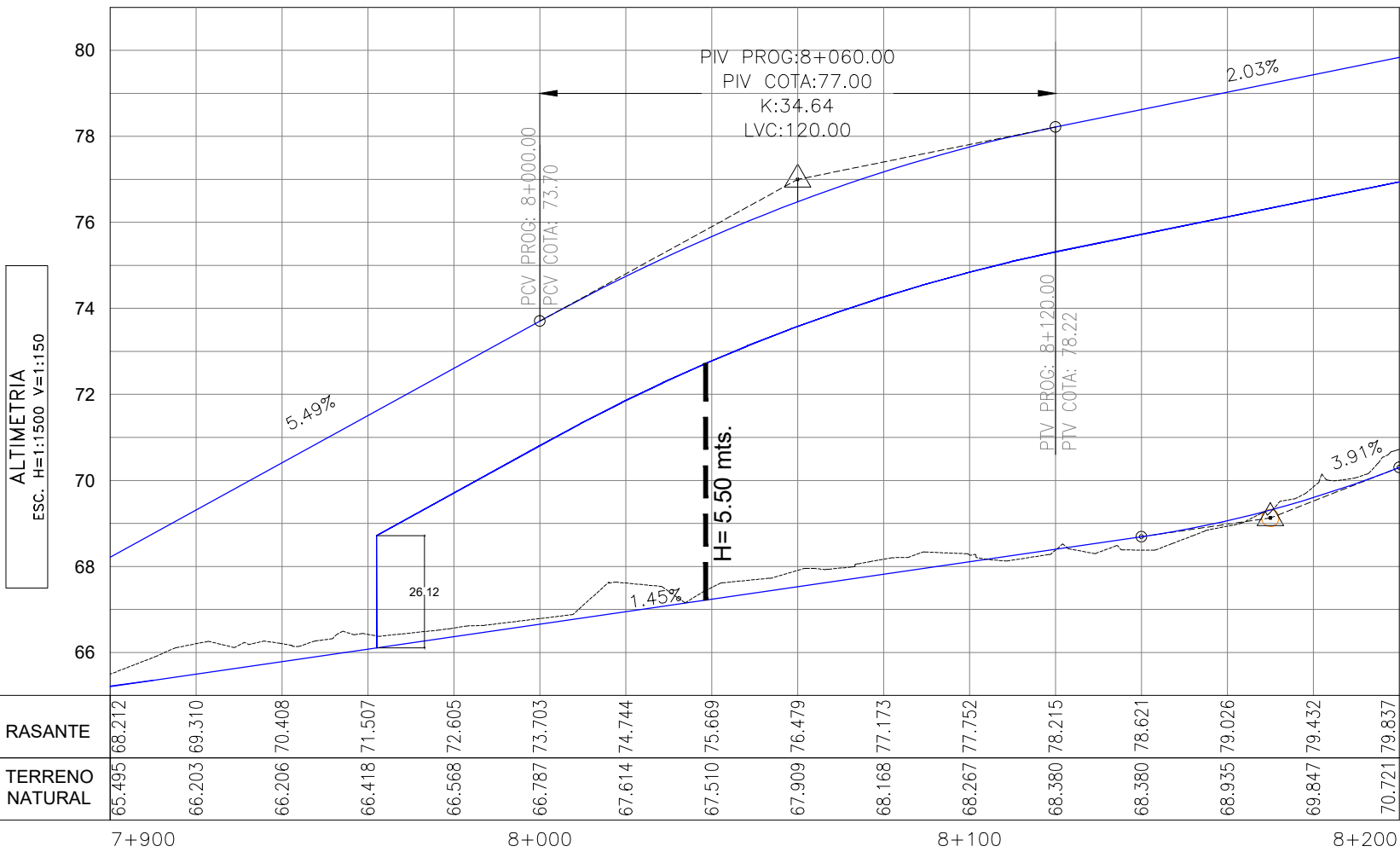
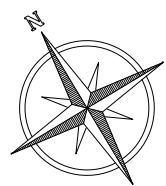
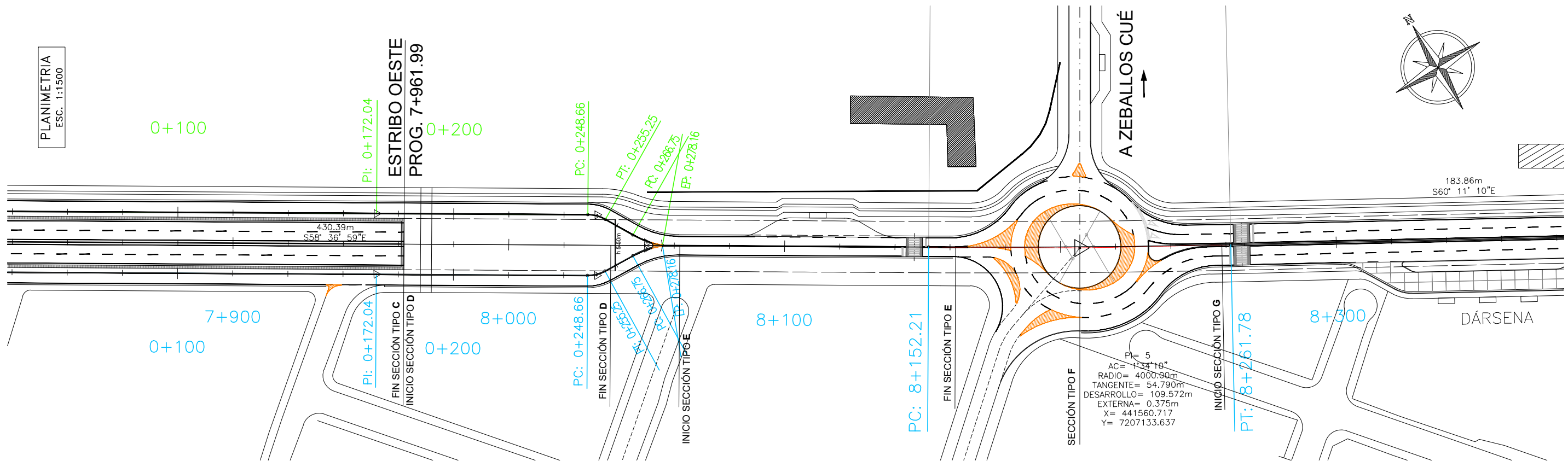


PLANIMETRIA
ESC. 1:1500



REPUBLICA DEL PARAGUAY
M.O.P.C.
VICEMINISTERIO DE OBRAS PUBLICAS
DIRECCION DE VIALIDAD
UNIDAD NACIONAL EJECUTORA FOCEM



AVENIDA COSTANERA NORTE
2DA. ETAPA - ASUNCIÓN
TRAMO INTERCONEXIÓN

PLANIALTIMETRIA
7+900+ a 8+400

Escalas Indicadas	Lámina DG - 03 - RVO
----------------------	-------------------------