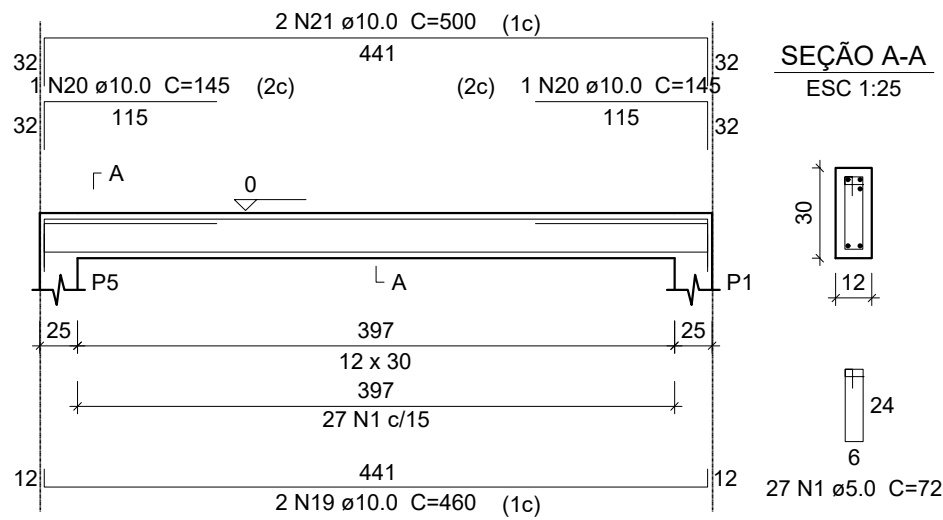


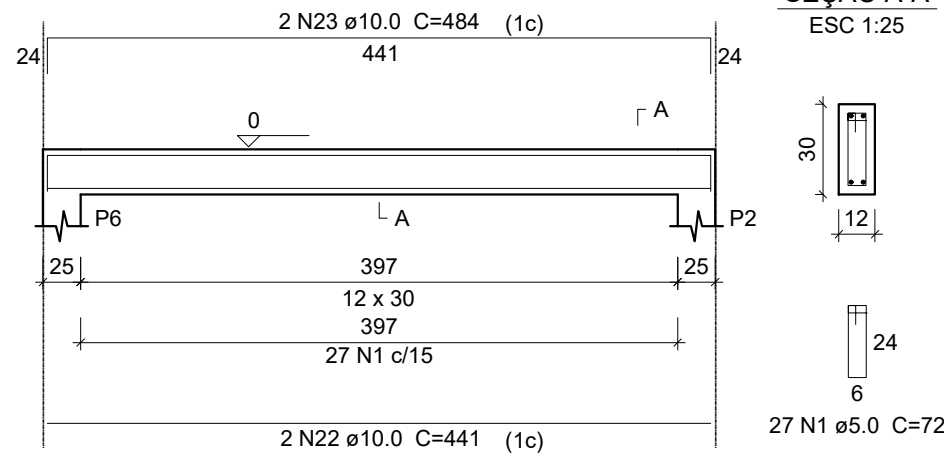
V6

ESC 1:50



V7

ESC 1:50



SEÇÃO A-A

ESC 1:25

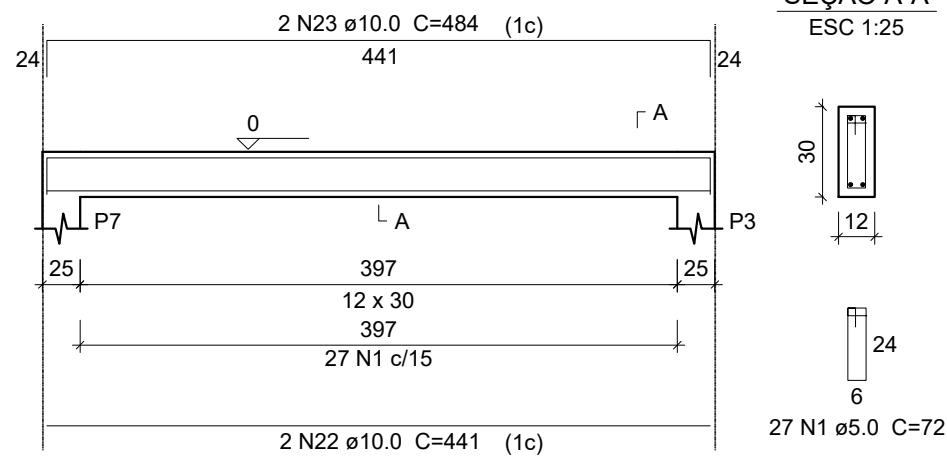
Relación de acero

V1	V2	V3
V4	V5	V6
V7	V8	V9
V10		

acero	N	DIAM	Q	UNIT (cm)	C.TOTAL (cm)
CA60	1	5.0	290	72	20880
	2	5.0	2	330	660
CA50	3	10.0	2	281	562
	4	10.0	2	313	626
	5	10.0	2	337	674
	6	10.0	2	359	718
	7	10.0	2	187	374
	8	10.0	2	501	1002
	9	10.0	1	231	231
	10	10.0	2	538	1076
	11	10.0	2	548	1096
	12	10.0	2	250	500
	13	10.0	2	263	526
	14	10.0	2	197	394
	15	10.0	2	1071	2142
	16	10.0	1	165	165
	17	10.0	2	547	1094
	18	10.0	2	1114	2228
	19	10.0	6	460	2760
	20	10.0	2	145	290
	21	10.0	2	500	1000
	22	10.0	4	441	1764
	23	10.0	4	484	1936
	24	10.0	2	355	710
	25	10.0	2	74	148
	26	10.0	2	79	158
	27	10.0	1	277	277
	28	10.0	1	160	160
	29	10.0	1	499	499
	30	10.0	2	506	1012

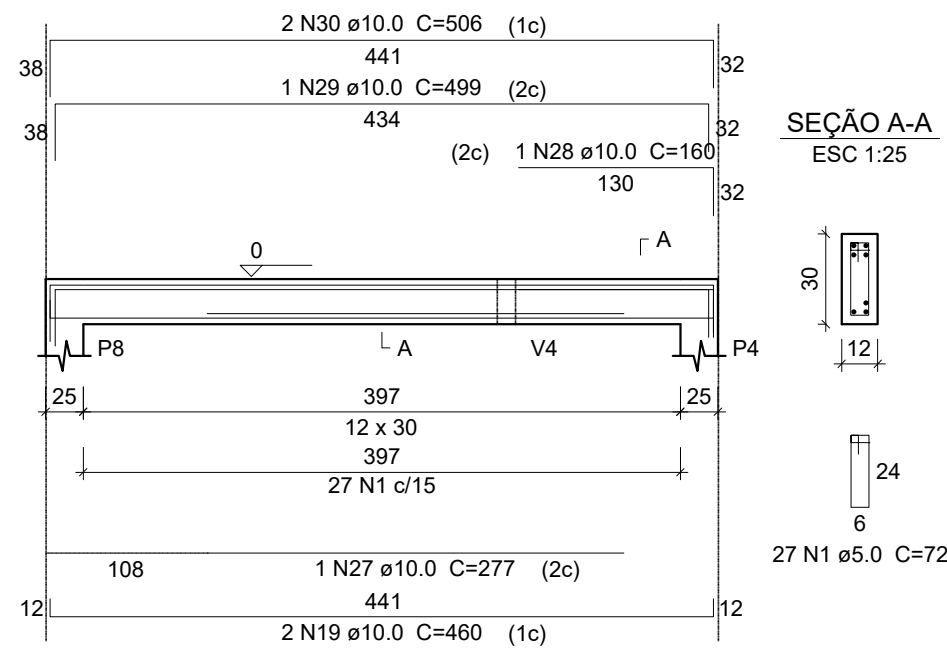
V8

ESC 1:50



V10

ESC 1:50

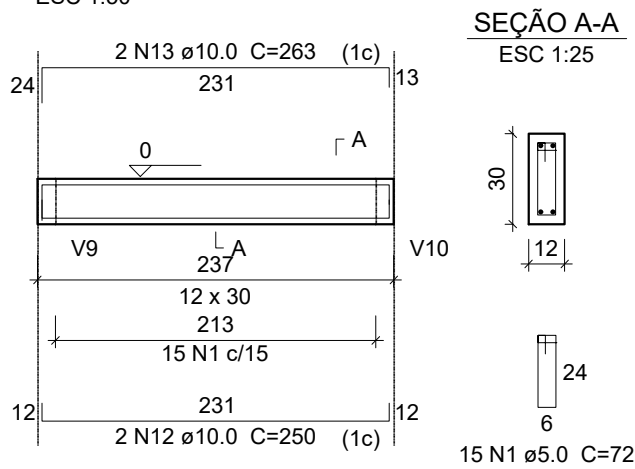


SEÇÃO A-A

ESC 1:25

V4

ESC 1:50



SEÇÃO A-A

ESC 1:25

Resumen de acero

acero	DIAM	C.TOTAL (m)	PESO + 10 % (kg)
CA50	10.0	241.3	163.6
CA60	5.0	215.4	36.5
PESO TOTAL			
		Indice de Consumo de Acero	
		Previsto - 70.06 kg.m3	
		Calculado - 119.10 kg.m3	

Vol. de Hormigón Previsto(C-25) = 2,92 m³

Vol. de Hormigón total (C-25) = 1.68 m³

Área de forma total = 33.67 m²