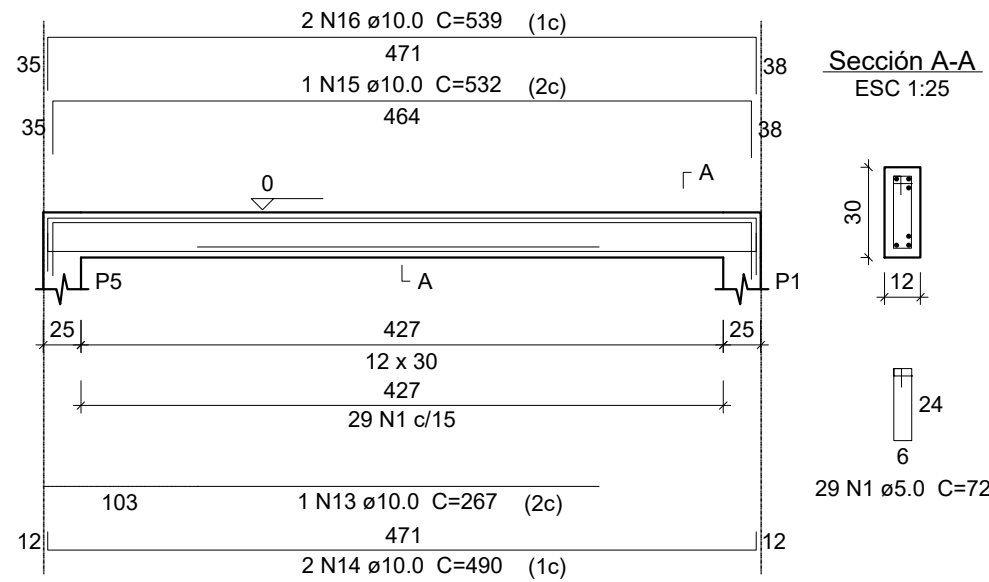


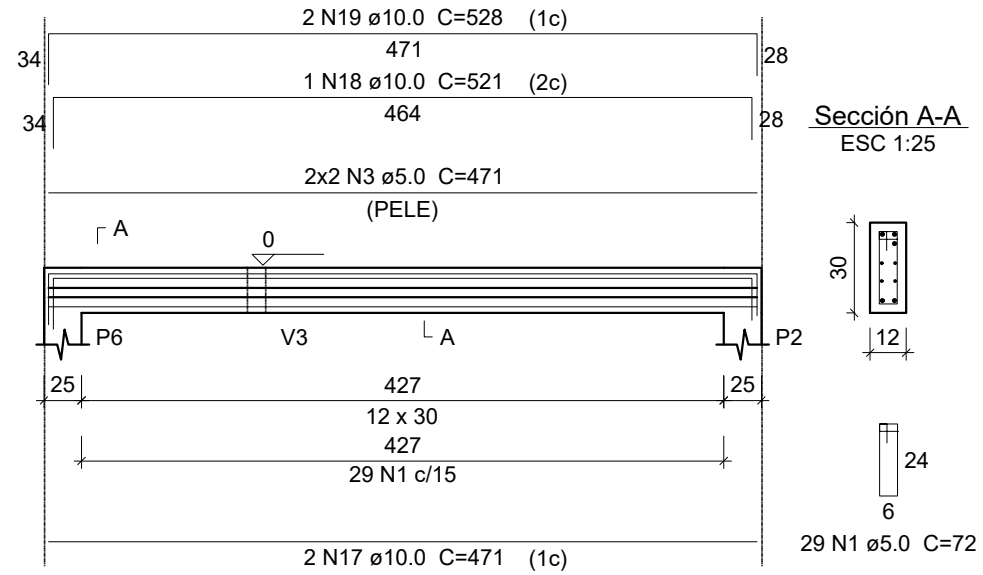
V5

ESC 1:50



V6

ESC 1:50

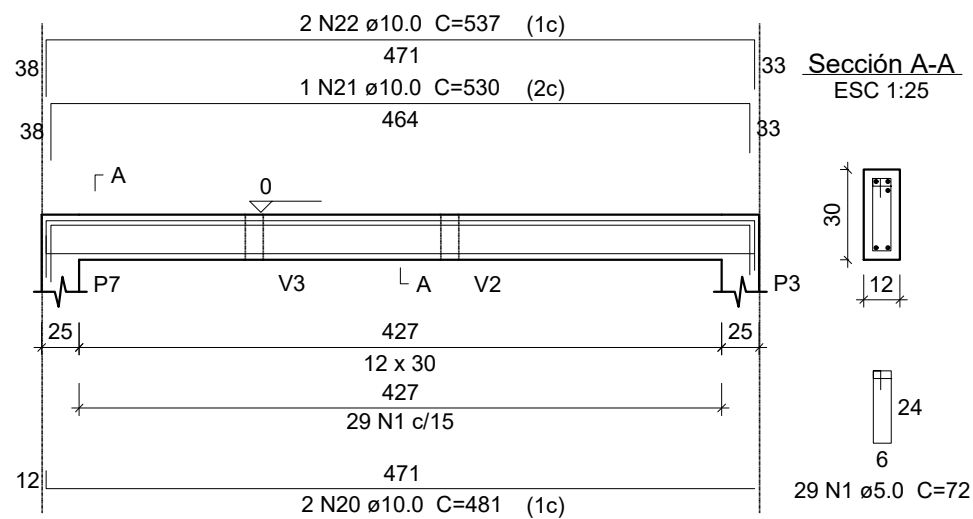


Relación de acero

Acero	N	DIAM	Q	UNIT (cm)	C.TOTAL (cm)
V1		V2		V3	
V4		V5		V6	
V7		V8			
CA60	1	5.0	294	72	21168
	2	5.0	2	393	786
	3	5.0	4	471	1884
CA50	4	10.0	4	1101	4404
	5	10.0	1	589	589
	6	10.0	4	1144	4576
	7	10.0	2	220	440
	8	10.0	2	222	444
	9	10.0	1	300	300
	10	10.0	2	460	920
	11	10.0	2	69	138
	12	10.0	1	584	584
	13	10.0	1	267	267
	14	10.0	4	490	1960
	15	10.0	1	532	532
	16	10.0	2	539	1078
	17	10.0	2	471	942
	18	10.0	1	521	521
	19	10.0	2	528	1056
	20	10.0	2	481	962
	21	10.0	1	530	530
	22	10.0	2	537	1074
	23	10.0	1	247	247
	24	10.0	1	147	147
	25	10.0	1	168	168
	26	10.0	1	528	528
	27	10.0	2	535	1070

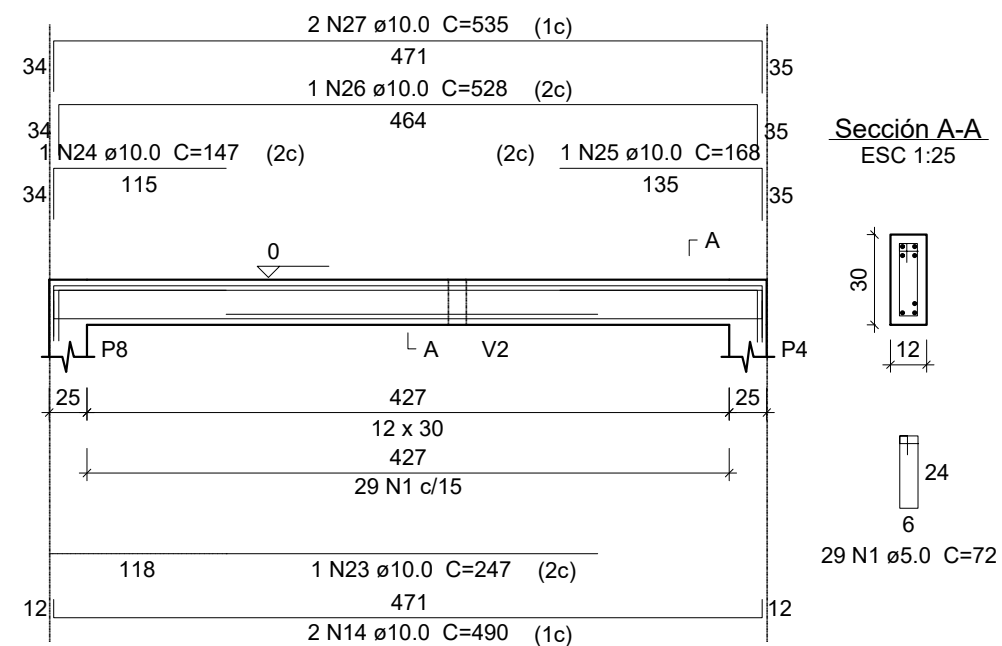
V7

ESC 1:50



V8

ESC 1:50



Resumen de acero

Acero	DIAM	C.TOTAL (m)	PESO + 10 % (kg)
CA50	10.0	234.8	159.2
CA60	5.0	238.4	40.4
PESO TOTAL			
Índice de Consumo de Acero			
Previsto - 76.06 kg.m3			
Calculado - 64.24 kg.m3			

Vol. de Hormigón Previsto(C-25) = 3,28 m³

Vol. de Hormigón total (C-25) = 1.72 m³
Área de forma total = 34.39 m²